



Oh sing to the LORD a new song,  
for he has done marvelous things!  
His right hand and his holy arm  
have worked salvation for him.

The LORD has made known his salvation;  
He has revealed his righteousness in the  
sight of the nations.

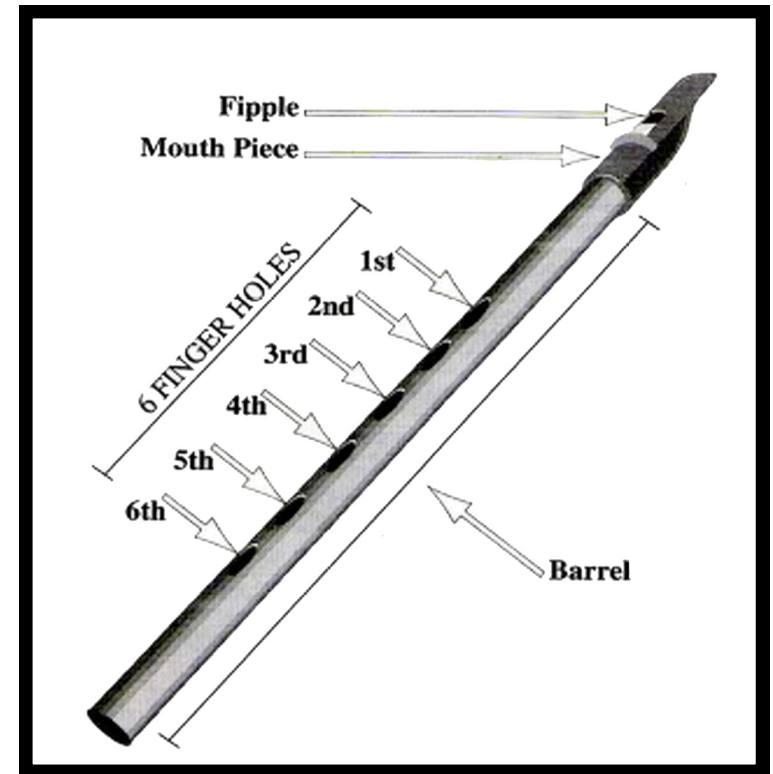
He has remembered his steadfast  
love and faithfulness to the house of Israel.  
All the ends of the earth have seen  
the salvation of our God.

Make a joyous noise to the LORD, all the earth;  
break forth into joyous song and sing praises!

Sing praises to the LORD with the lyre,  
with the lyre and the sound of melody!

With trumpets and the sound of the horn  
make a joyful noise before the King, the LORD!

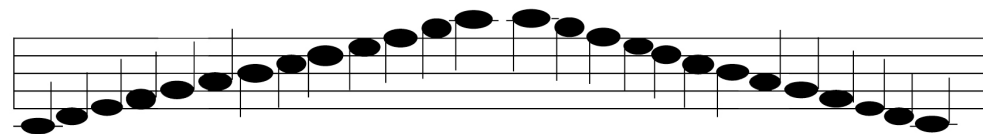
~Psalm 98 : 1-6



Classical Conversations Fine Arts presents:

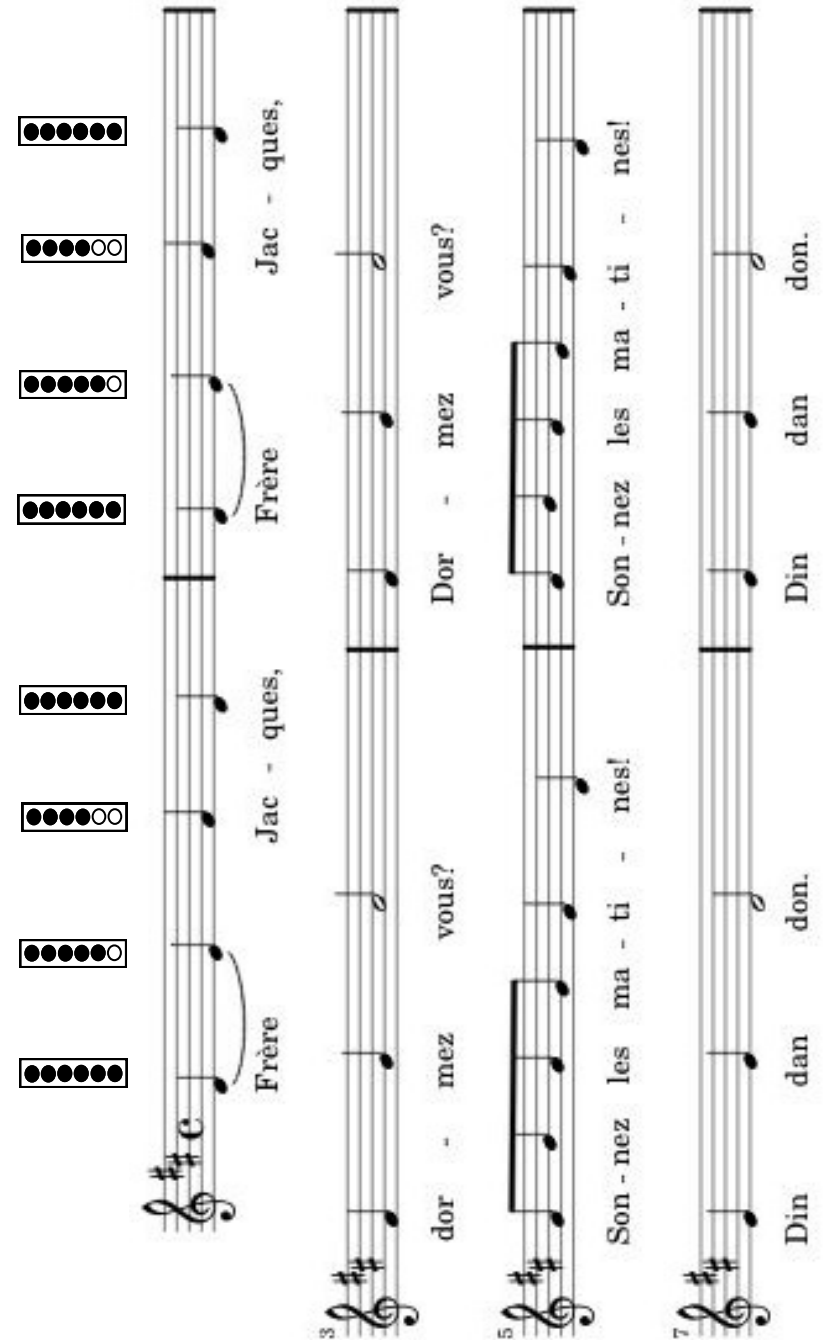
# Tin Whistle

Weeks 7-12



## Introduction to the Tin Whistle and Musical Symbols

Instrument - Any of various devices or contrivances that can be used to produce musical tones or sounds.



Learn your notes and use this music to practice.

## The Butterfly Jig

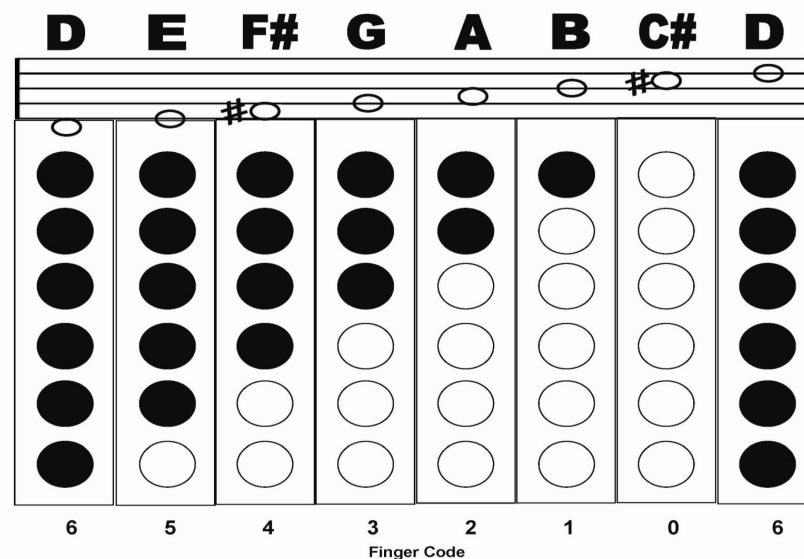


## All those endearing young charms



Finger code - shows how each note is played .

## PLAYING THE "D" SCALE



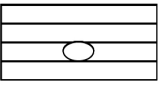
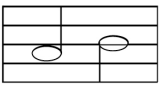
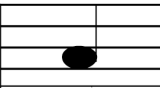
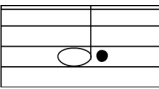
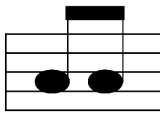
Staff - A group of 5 lines used for writing the notes of a song.

Practice writing some notes on the below.




# Week 8

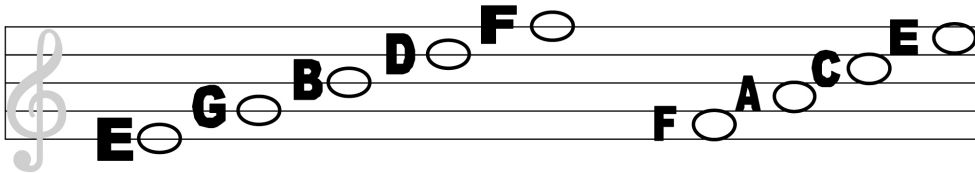
## Musical Symbol Meanings & Left hand Tin Whistle Exercises

				
Whole Note	Half Note	Quarter Note	Dotted Half Note	Eighth Note with Flag

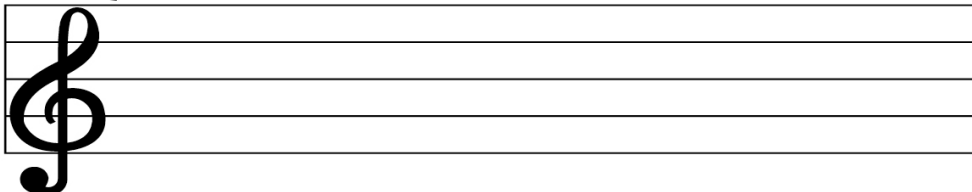
### Note Names

When the note is on the line:  
Every Good Boy Does Fine

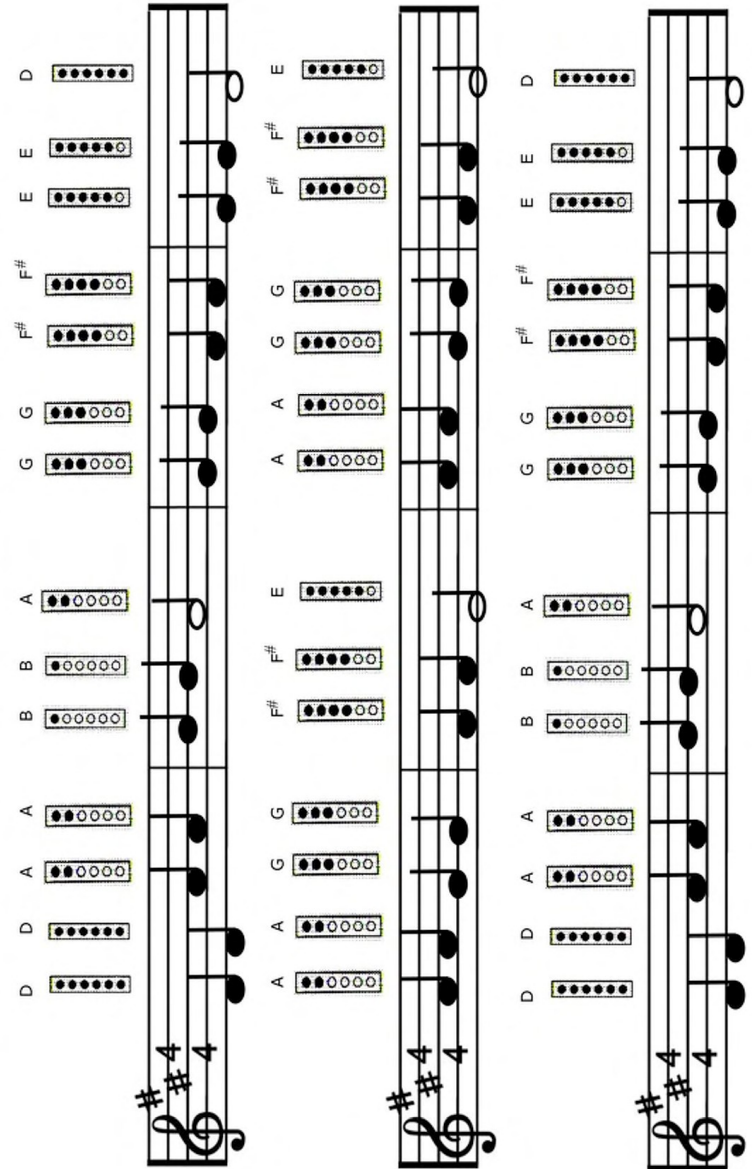
When the note is on the space:  
It spells the word F - A - C - E



Treble Clef - Practice drawing more on the staff.



## Twinkle, Twinkle, Little Star



The musical score for 'Twinkle, Twinkle, Little Star' is presented in three systems. Each system consists of a musical staff in G major (one sharp) and 4/4 time, followed by a column of tin whistle fingerings for each note. The notes and their corresponding fingerings are as follows:

- System 1:** D (finger 1), D (finger 1), E (finger 2), E (finger 2), F# (finger 3), F# (finger 3), G (finger 4), G (finger 4), A (finger 5), A (finger 5), B (finger 6), B (finger 6), C (finger 7), C (finger 7), D (finger 1), D (finger 1).
- System 2:** E (finger 2), E (finger 2), F# (finger 3), F# (finger 3), G (finger 4), G (finger 4), A (finger 5), A (finger 5), B (finger 6), B (finger 6), C (finger 7), C (finger 7), D (finger 1), D (finger 1), E (finger 2), E (finger 2).
- System 3:** F# (finger 3), F# (finger 3), G (finger 4), G (finger 4), A (finger 5), A (finger 5), B (finger 6), B (finger 6), C (finger 7), C (finger 7), D (finger 1), D (finger 1), E (finger 2), E (finger 2), F# (finger 3), F# (finger 3).

## Week 12

### Musical Dynamics 2 and More Tune Playing

piano - playing softly; *p*

forte - playing loud or forcefully; *f*

mezzo piano - medium soft; *mp*

mezzo forte - medium loud; *mf*



### London Bridges Falling Down

Diagram of finger positions for the first line of the song. Each note is represented by a vertical bar with circles indicating finger placement (1-5). The notes are: G4 (1), A4 (2), B4 (3), C5 (4), D5 (5), E5 (1), F5 (2), G5 (3), A5 (4), B5 (5), C6 (1), D6 (2), E6 (3), F6 (4), G6 (5).

Lon - don Bridge is fal - ling down, fal - ling down, fal - ling down.

Diagram of finger positions for the second line of the song. Each note is represented by a vertical bar with circles indicating finger placement (1-5). The notes are: G4 (1), A4 (2), B4 (3), C5 (4), D5 (5), E5 (1), F5 (2), G5 (3), A5 (4), B5 (5), C6 (1), D6 (2), E6 (3), F6 (4), G6 (5).

Lon - don Bridge is fal - ling down, my fair la - dy.

Left Hand Exercise ~~~~ Notes: B A G

Diagram of finger positions for the left hand exercise. Each note is represented by a vertical bar with circles indicating finger placement (1-5). The notes are: B4 (1), A4 (2), G4 (3), B4 (1), A4 (2), G4 (3), B4 (1), A4 (2), G4 (3), B4 (1), A4 (2), G4 (3), B4 (1), A4 (2), G4 (3).

Diagram

Finger Code 1 2 3 2 3 2 1 2 3 2 1 2 3


## Musical Symbol Rhythm and Right Hand Tin Whistle Exercise

The first staff of music is written in treble clef with a 4/4 time signature. It begins with a whole rest, followed by a half rest, then a quarter rest, and a quarter note. This is followed by a series of eighth notes: G4, A4, B4, C5, B4, A4, G4, F#4, E4, D4, C4, B3, A3, G3, F#3, E3, D3, C3, B2, A2, G2, F#2, E2, D2, C2, B1, A1, G1, F#1, E1, D1, C1, B0, A0, G0, F#0, E0, D0, C0, B-1, A-1, G-1, F#-1, E-1, D-1, C-1, B-2, A-2, G-2, F#-2, E-2, D-2, C-2, B-3, A-3, G-3, F#-3, E-3, D-3, C-3, B-4, A-4, G-4, F#-4, E-4, D-4, C-4, B-5, A-5, G-5, F#-5, E-5, D-5, C-5, B-6, A-6, G-6, F#-6, E-6, D-6, C-6, B-7, A-7, G-7, F#-7, E-7, D-7, C-7, B-8, A-8, G-8, F#-8, E-8, D-8, C-8, B-9, A-9, G-9, F#-9, E-9, D-9, C-9, B-10, A-10, G-10, F#-10, E-10, D-10, C-10, B-11, A-11, G-11, F#-11, E-11, D-11, C-11, B-12, A-12, G-12, F#-12, E-12, D-12, C-12, B-13, A-13, G-13, F#-13, E-13, D-13, C-13, B-14, A-14, G-14, F#-14, E-14, D-14, C-14, B-15, A-15, G-15, F#-15, E-15, D-15, C-15, B-16, A-16, G-16, F#-16, E-16, D-16, C-16, B-17, A-17, G-17, F#-17, E-17, D-17, C-17, B-18, A-18, G-18, F#-18, E-18, D-18, C-18, B-19, A-19, G-19, F#-19, E-19, D-19, C-19, B-20, A-20, G-20, F#-20, E-20, D-20, C-20, B-21, A-21, G-21, F#-21, E-21, D-21, C-21, B-22, A-22, G-22, F#-22, E-22, D-22, C-22, B-23, A-23, G-23, F#-23, E-23, D-23, C-23, B-24, A-24, G-24, F#-24, E-24, D-24, C-24, B-25, A-25, G-25, F#-25, E-25, D-25, C-25, B-26, A-26, G-26, F#-26, E-26, D-26, C-26, B-27, A-27, G-27, F#-27, E-27, D-27, C-27, B-28, A-28, G-28, F#-28, E-28, D-28, C-28, B-29, A-29, G-29, F#-29, E-29, D-29, C-29, B-30, A-30, G-30, F#-30, E-30, D-30, C-30, B-31, A-31, G-31, F#-31, E-31, D-31, C-31, B-32, A-32, G-32, F#-32, E-32, D-32, C-32, B-33, A-33, G-33, F#-33, E-33, D-33, C-33, B-34, A-34, G-34, F#-34, E-34, D-34, C-34, B-35, A-35, G-35, F#-35, E-35, D-35, C-35, B-36, A-36, G-36, F#-36, E-36, D-36, C-36, B-37, A-37, G-37, F#-37, E-37, D-37, C-37, B-38, A-38, G-38, F#-38, E-38, D-38, C-38, B-39, A-39, G-39, F#-39, E-39, D-39, C-39, B-40, A-40, G-40, F#-40, E-40, D-40, C-40, B-41, A-41, G-41, F#-41, E-41, D-41, C-41, B-42, A-42, G-42, F#-42, E-42, D-42, C-42, B-43, A-43, G-43, F#-43, E-43, D-43, C-43, B-44, A-44, G-44, F#-44, E-44, D-44, C-44, B-45, A-45, G-45, F#-45, E-45, D-45, C-45, B-46, A-46, G-46, F#-46, E-46, D-46, C-46, B-47, A-47, G-47, F#-47, E-47, D-47, C-47, B-48, A-48, G-48, F#-48, E-48, D-48, C-48, B-49, A-49, G-49, F#-49, E-49, D-49, C-49, B-50, A-50, G-50, F#-50, E-50, D-50, C-50, B-51, A-51, G-51, F#-51, E-51, D-51, C-51, B-52, A-52, G-52, F#-52, E-52, D-52, C-52, B-53, A-53, G-53, F#-53, E-53, D-53, C-53, B-54, A-54, G-54, F#-54, E-54, D-54, C-54, B-55, A-55, G-55, F#-55, E-55, D-55, C-55, B-56, A-56, G-56, F#-56, E-56, D-56, C-56, B-57, A-57, G-57, F#-57, E-57, D-57, C-57, B-58, A-58, G-58, F#-58, E-58, D-58, C-58, B-59, A-59, G-59, F#-59, E-59, D-59, C-59, B-60, A-60, G-60, F#-60, E-60, D-60, C-60, B-61, A-61, G-61, F#-61, E-61, D-61, C-61, B-62, A-62, G-62, F#-62, E-62, D-62, C-62, B-63, A-63, G-63, F#-63, E-63, D-63, C-63, B-64, A-64, G-64, F#-64, E-64, D-64, C-64, B-65, A-65, G-65, F#-65, E-65, D-65, C-65, B-66, A-66, G-66, F#-66, E-66, D-66, C-66, B-67, A-67, G-67, F#-67, E-67, D-67, C-67, B-68, A-68, G-68, F#-68, E-68, D-68, C-68, B-69, A-69, G-69, F#-69, E-69, D-69, C-69, B-70, A-70, G-70, F#-70, E-70, D-70, C-70, B-71, A-71, G-71, F#-71, E-71, D-71, C-71, B-72, A-72, G-72, F#-72, E-72, D-72, C-72, B-73, A-73, G-73, F#-73, E-73, D-73, C-73, B-74, A-74, G-74, F#-74, E-74, D-74, C-74, B-75, A-75, G-75, F#-75, E-75, D-75, C-75, B-76, A-76, G-76, F#-76, E-76, D-76, C-76, B-77, A-77, G-77, F#-77, E-77, D-77, C-77, B-78, A-78, G-78, F#-78, E-78, D-78, C-78, B-79, A-79, G-79, F#-79, E-79, D-79, C-79, B-80, A-80, G-80, F#-80, E-80, D-80, C-80, B-81, A-81, G-81, F#-81, E-81, D-81, C-81, B-82, A-82, G-82, F#-82, E-82, D-82, C-82, B-83, A-83, G-83, F#-83, E-83, D-83, C-83, B-84, A-84, G-84, F#-84, E-84, D-84, C-84, B-85, A-85, G-85, F#-85, E-85, D-85, C-85, B-86, A-86, G-86, F#-86, E-86, D-86, C-86, B-87, A-87, G-87, F#-87, E-87, D-87, C-87, B-88, A-88, G-88, F#-88, E-88, D-88, C-88, B-89, A-89, G-89, F#-89, E-89, D-89, C-89, B-90, A-90, G-90, F#-90, E-90, D-90, C-90, B-91, A-91, G-91, F#-91, E-91, D-91, C-91, B-92, A-92, G-92, F#-92, E-92, D-92, C-92, B-93, A-93, G-93, F#-93, E-93, D-93, C-93, B-94, A-94, G-94, F#-94, E-94, D-94, C-94, B-95, A-95, G-95, F#-95, E-95, D-95, C-95, B-96, A-96, G-96, F#-96, E-96, D-96, C-96, B-97, A-97, G-97, F#-97, E-97, D-97, C-97, B-98, A-98, G-98, F#-98, E-98, D-98, C-98, B-99, A-99, G-99, F#-99, E-99, D-99, C-99, B-100, A-100, G-100, F#-100, E-100, D-100, C-100, B-101, A-101, G-101, F#-101, E-101, D-101, C-101, B-102, A-102, G-102, F#-102, E-102, D-102, C-102, B-103, A-103, G-103, F#-103, E-103, D-103, C-103, B-104, A-104, G-104, F#-104, E-104, D-104, C-104, B-105, A-105, G-105, F#-105, E-105, D-105, C-105, B-106, A-106, G-106, F#-106, E-106, D-106, C-106, B-107, A-107, G-107, F#-107, E-107, D-107, C-107, B-108, A-108, G-108, F#-108, E-108, D-10

The diagram illustrates the components of musical notation on a five-line staff. On the left, a treble clef is shown. To its right is the time signature '4/4'. The staff is divided into measures by vertical bar lines. Above the staff, a bracket labeled 'Measure' spans the first four measures. Below the staff, an arrow points to the '4/4' time signature with the label 'Time Signature'. Another arrow points to the vertical bar lines with the label 'Bar Lines'. The notes are as follows: Measure 1 contains a single half note (white circle). Measure 2 contains two quarter notes (white circles). Measure 3 contains four eighth notes (black dots). Measure 4 contains a sequence of eighth and sixteenth notes, including beamed eighth notes and sixteenth notes.

# Mary Had a Little Lamb

<p>Mary had a little lamb</p>	<p>white as snow</p>
<p>0 1 2 1 0 0 0 0</p>	<p>0 1 2 1 0 0 0 0</p>

## Week 11

### Musical Scale and Playing a Simple Tune on the Tin Whistle

#### Dynamics -

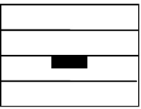
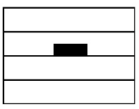

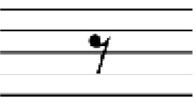
Markings in music which indicate variation in force or intensity

Crescendo - Gradual increase in the volume of the music

Legato - Smooth connected notes

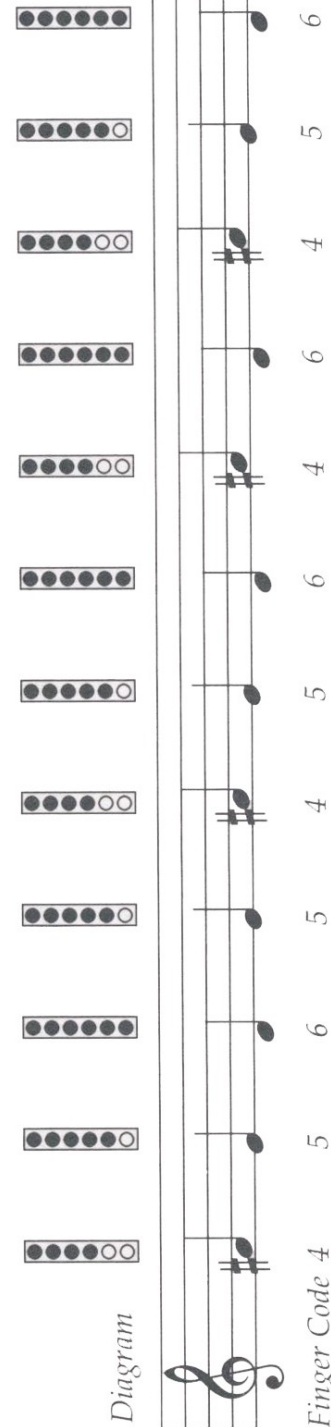
Staccato - Disconnected, short clear-cut notes

Rest - A symbol that indicates silence

			
Whole Rest (4 beats)	Half Rest (2 beats)	Quarter Rest (1 beat)	Eighth Rest (1/2 beat)

#### Right Hand Exercise ~~~ Notes: F# E D

Diagram



Finger Code 4 5 6 4 5 6 4 5 6 4 5 6


## Musical Scale and Playing a Simple Tune on the Tin Whistle


A musical staff showing the C major scale. The notes are C, D, E, F, G, A, B, C, D, E, F, G, A, A, G, F, E, D, C, B, A, G, F, E, D, C. The notes are written on a grand staff with a treble clef and a bass clef. The notes are written in a way that shows the scale ascending and then descending.

Tempo - Rate of speed

**C#**



**F#**



The diagram shows a musical staff with a treble clef and a key signature of one sharp (F#). The staff contains ten notes, each with a specific fingering indicated by a box of ten circles (1-5 are black, 6-10 are white). The notes and their fingerings are: G4 (1), A4 (2), B4 (3), C5 (4), D5 (5), E5 (6), F#5 (1), G5 (3), A5 (5), and B5 (6). Below the staff, the Finger Codes are listed: 1, 2, 3, 4, 5, 6, 3, 4, 5, 6.

--	--	--	--