

Monet

Dabble in Paint

Goal: To guide students to reproduce recognizable sample of work in short time and to ignite students' interest in exploring further at home.

1. Use big brush and lots of water. Wash green on top and blue on bottom. Include sides of canvas.



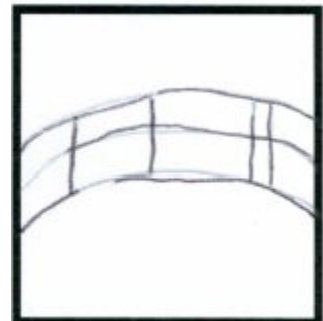
2. Use flat medium or small brush. Dab yellow green in areas marked (look at Monet's picture)



3. Use flat medium or small brush. Dab green in areas marked (look at Monet's picture)



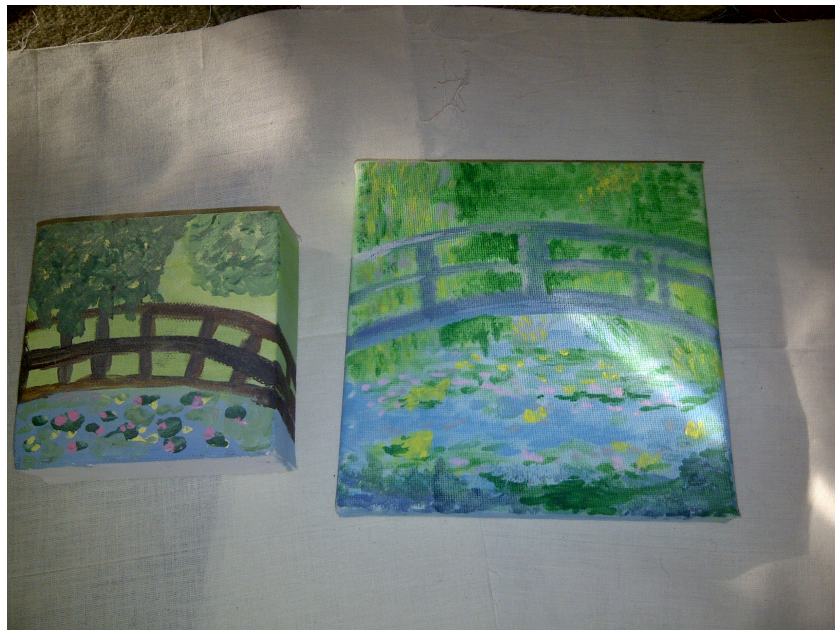
4. Use tiny flat or round brush. Make blue/grey mix for bridge. As marked (look at Monet's picture)



5. Use tiny flat or round brush. DAB blue/grey in water. DAB green in trees & water. DAB yellow in trees & water. DAB pink, white, grey etc.



The Waterlily Pond with the Japanese Bridge, 1899



Student's

Tutor's