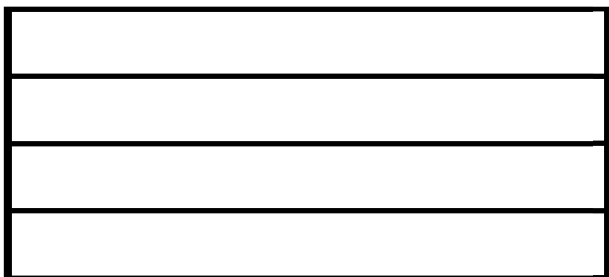
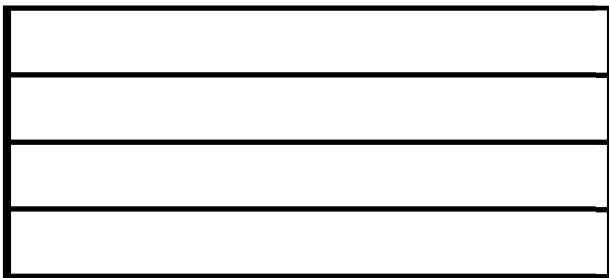


TIN WHISTLE PAGES

CC connected user: sheriellis



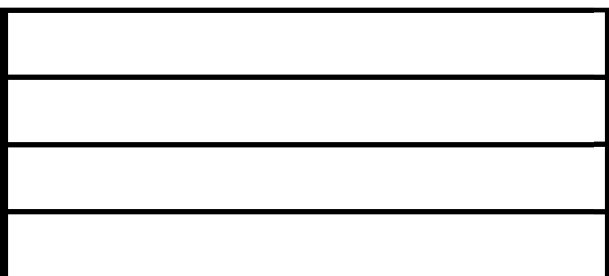
Draw a
WHOLE NOTE



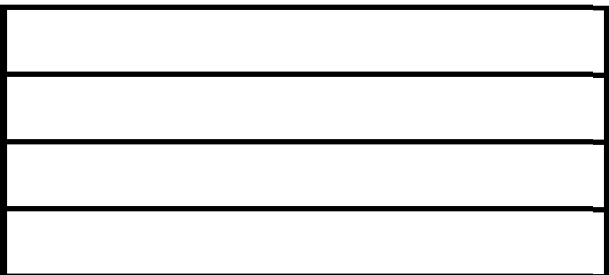
Draw a
HALF NOTE



Draw a
QUARTER NOTE

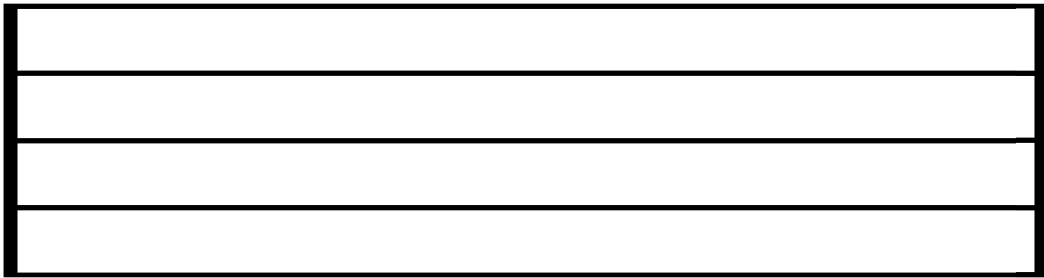


Draw a
DOTTED
HALF NOTE



Draw an
EIGHTH NOTE

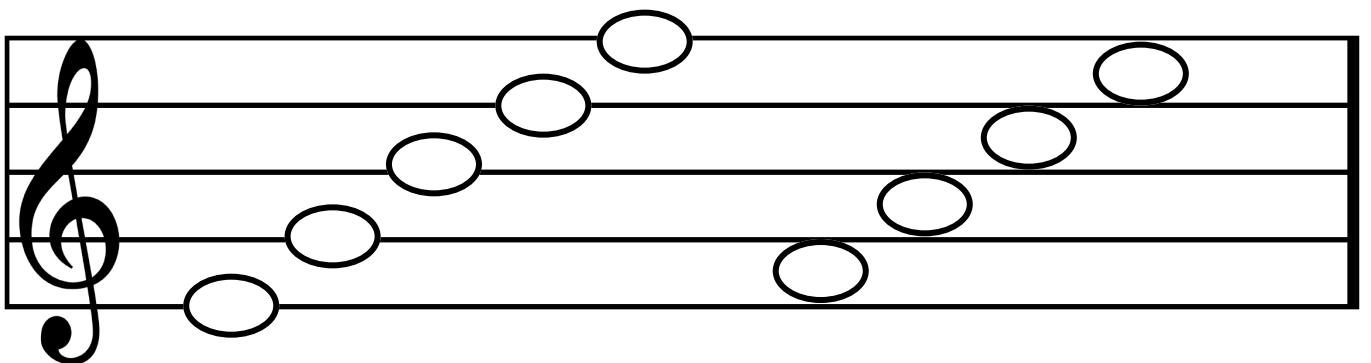
Practice drawing the TREBLE CLEF.



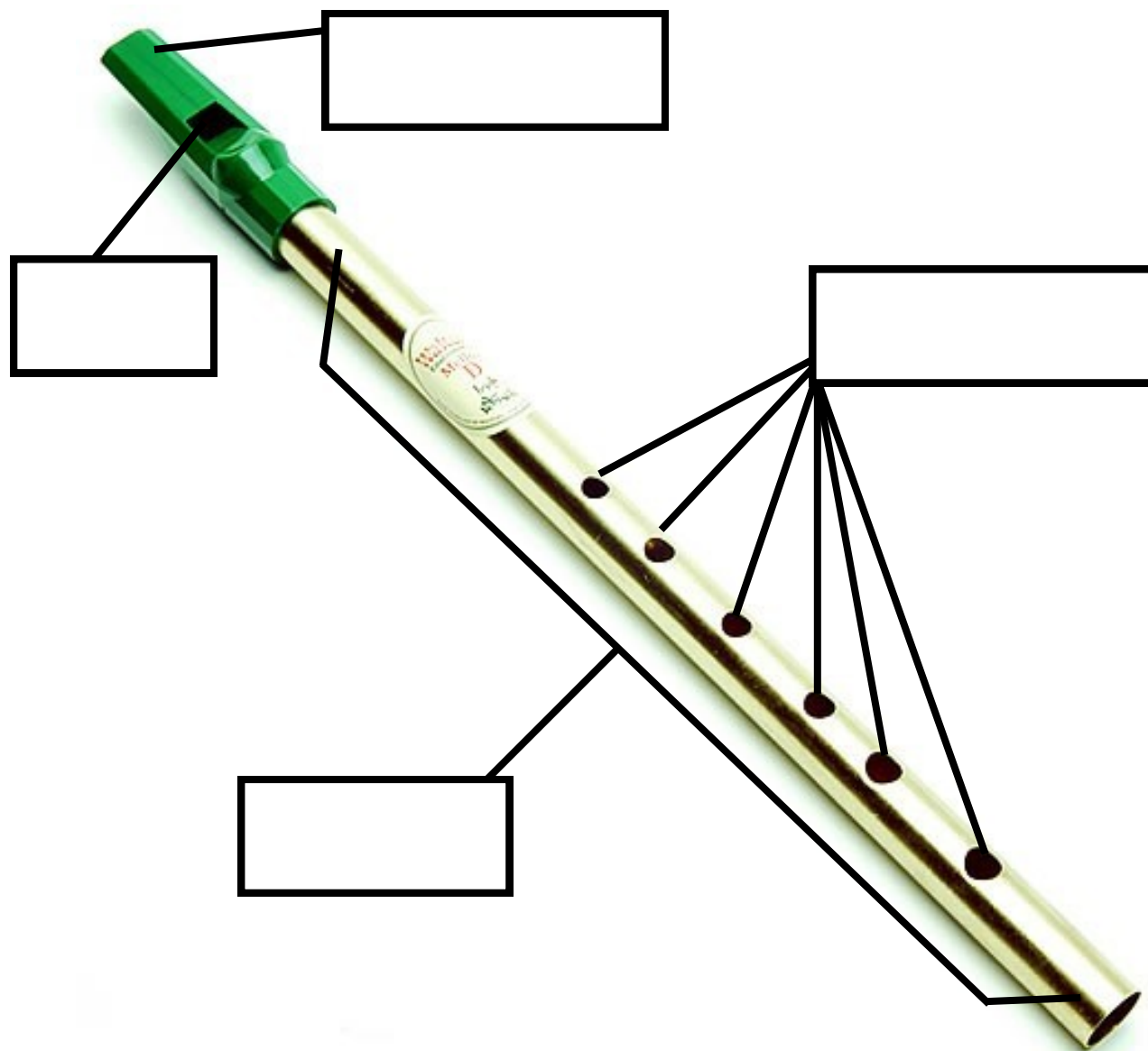
Practice drawing the BASS CLEF.



Write the note names.



THIS IS MY



Fipple

Mouth Piece

Finger Holes

Barrel

Draw a line from the musical note to its name.
Write the amount of beats for
each note in the space below.



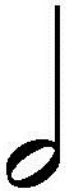
Eighth Note



Quarter Note



Half Note



Dotted Half Note



Whole Note

ANSWER

Draw a line from the musical note to its name.
Write the amount of beats for
each note in the space below.

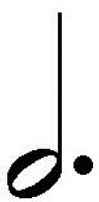




				
Eighth Note	Quarter Note	Whole Note	Dotted Half Note	Half Note
$\frac{1}{2}$	1	4	3	2

Diagram showing connections between musical notes and their names/beat values:

- Line from Eighth note to Quarter Note
- Line from Quarter note to Eighth Note
- Line from Half note to Dotted Half Note
- Line from Dotted half note to Half Note
- Line from Whole note to Whole Note

Draw a line to match a symbol to it's name. Draw the sharp next to the correct notes. Then color in the correct fingering code.

#

Flat

b

Sharp

D

E

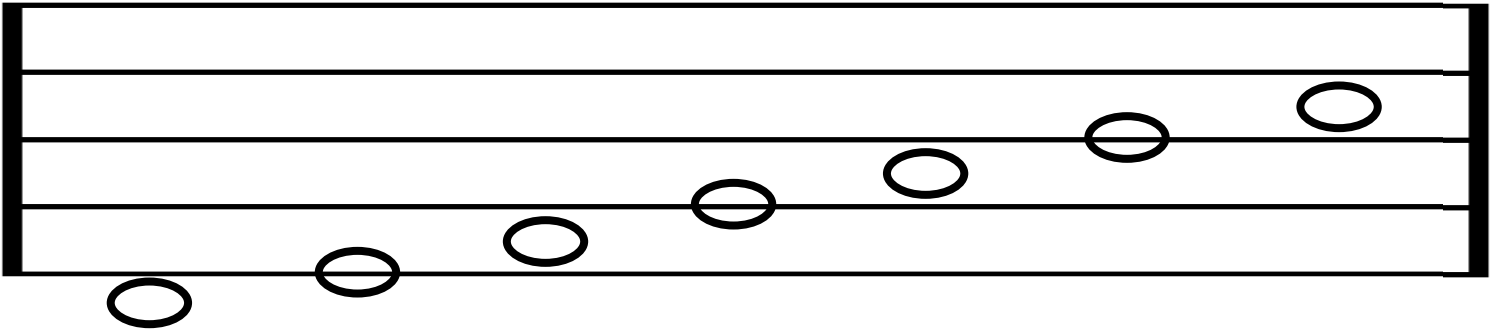
F#

G

A

B

C#

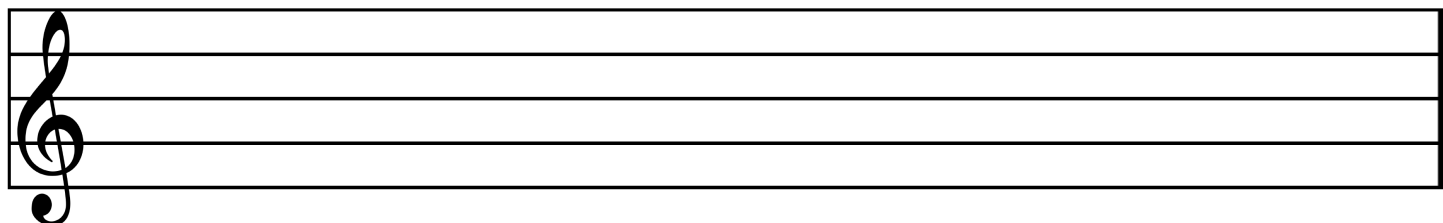
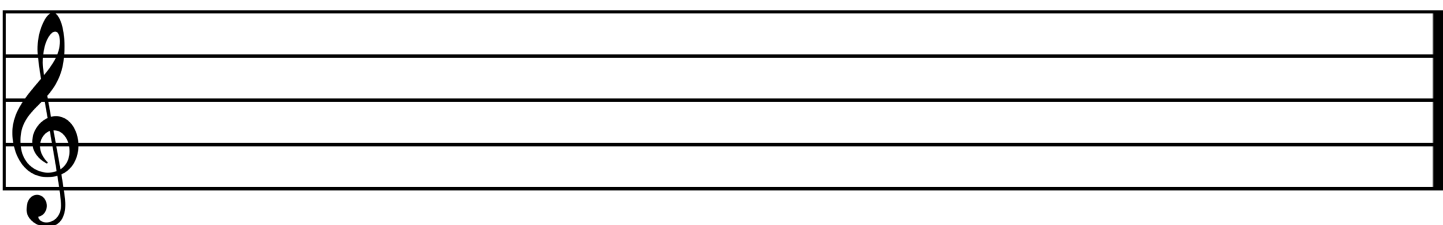
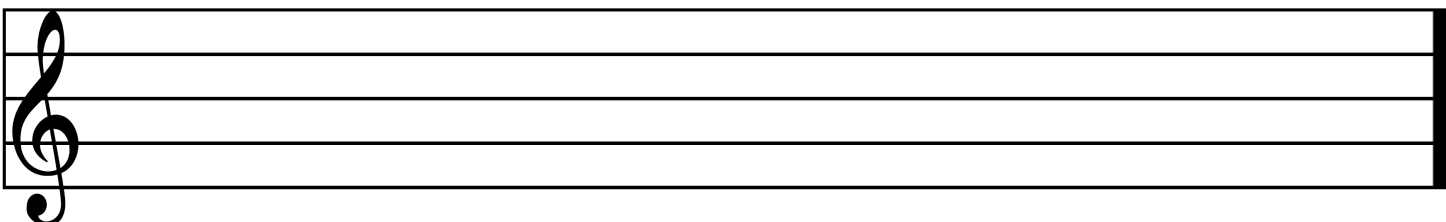
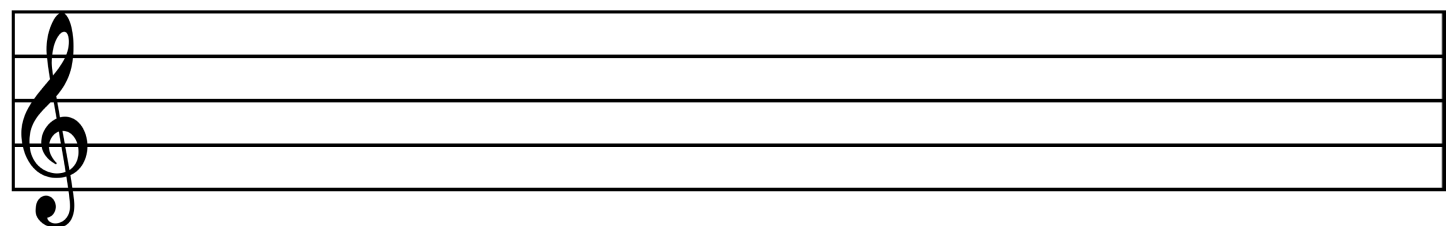
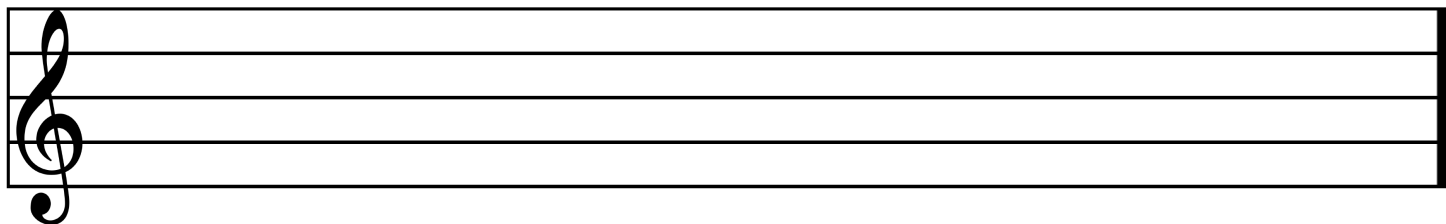


<input type="radio"/>	<input type="radio"/>	<input type="radio"/>	<input type="radio"/>	<input type="radio"/>	<input type="radio"/>	<input type="radio"/>
<input type="radio"/>	<input type="radio"/>	<input type="radio"/>	<input type="radio"/>	<input type="radio"/>	<input type="radio"/>	<input type="radio"/>
<input type="radio"/>	<input type="radio"/>	<input type="radio"/>	<input type="radio"/>	<input type="radio"/>	<input type="radio"/>	<input type="radio"/>
<input type="radio"/>	<input type="radio"/>	<input type="radio"/>	<input type="radio"/>	<input type="radio"/>	<input type="radio"/>	<input type="radio"/>
<input type="radio"/>	<input type="radio"/>	<input type="radio"/>	<input type="radio"/>	<input type="radio"/>	<input type="radio"/>	<input type="radio"/>
<input type="radio"/>	<input type="radio"/>	<input type="radio"/>	<input type="radio"/>	<input type="radio"/>	<input type="radio"/>	<input type="radio"/>



Back to D

Copy Mary Had a Little Lamb, or write your own!



Do you remember the musical symbols? Ask a parent to go over the meaning and names of these symbols. Then cut out the names and glue them under each symbol. Then write the meaning of the symbol.

p

means

f

means

mp

means

mf

means

mezzo forte

mezzo piano

forte

piano